



in Kingdom of Saudi Arabia

**Automation System
Solutions & Maintenance Est.**

مؤسسة الحلول الشاملة
لميانة المعدات والتشغيل الآلي

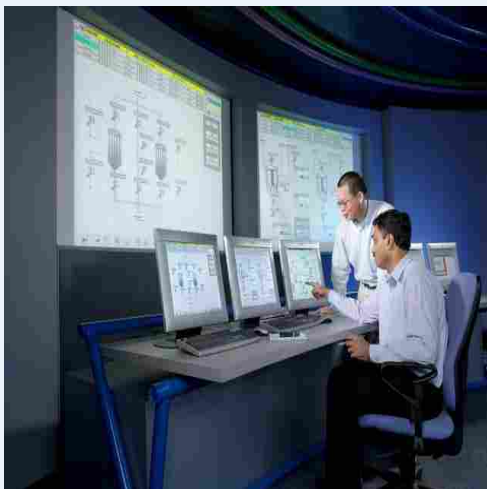
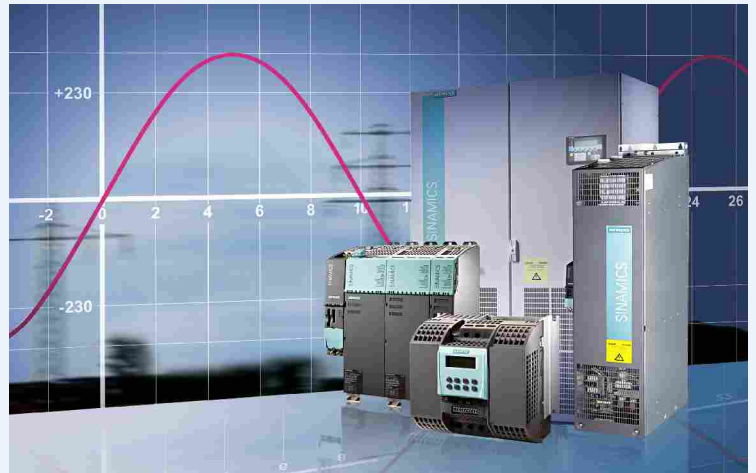


TABLE OF CONTENTS



Director's Message



Our Vision



Our Values



About Us



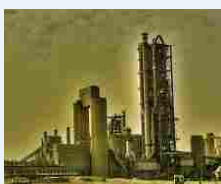
Product Spectrum



Projects / Services



Training



Customer / Projects Reference List



DIRECTOR'S MESSAGE:

Industrial automation and drives technology has advanced at a rapid pace. With the advent of Ethernet on the plant floor, device-level and component network and manufacturing execution systems, you look for not only quality products, but also the Knowledge to make them work. Today's technology offers innovative ways to approach automation and control issues. To take advantage of technology you need a partner who understands how to apply it to your needs. We offer a complete Product and service to our client. By entrusting us with your urgent requirement, you can avoid the down time or costs. Our willingness to listen to your needs and our flexible approach will enable us to meet your requirements.

ASSM has an expert group of professionals dedicated to understanding your business needs as well as finding the best solutions to ensure that we meet your most specific requirement. Staying on the cutting edge of the latest advances in automation and control products is our mission and your advantage in enterprise automation.

Mohammad Abdul Hameed Bin Mohammad Murshid

Director



VISION

To be the leading system integrators in the gulf region providing timely and cost effective solutions, characterized by quality products & services, in accordance with our values that are centered of faith, commitment and nurture human potential.



OUR VALUES

Integrity - We are always act with honesty, integrity and apply high ethical standards in our relationships with all our stakeholders

Excellence - We strive constantly to achieve excellence by offering the best products and highest standard of service, meeting and exceeding our customer's need.

Teamwork – Clients and employees are our most valuable assets. By working as a team we can collaborate, communicate and achieve success together, for mutual benefits.

Initiative - We will actively encourage leadership, innovation and initiative, and the sharing of ideas to achieve continuous improvement in every aspect of our business.

Care - We will always take care of our employees, our customers, the communities we touch and the environments we operate in. By providing continuous mentoring and training to our staff, transparent in our operating practices, continuous feedback and ensuring a balance of life.



INTRODUCTION:

We would like to introduce our self as a leading industrial service & support provider in the Kingdom and authorized service partner of Siemens. ASSM is 100% Saudi owned company, registered under laws of Saudi Arabia. Our company's strength is built on a well experienced and team of qualified personnel with relevant experience in all disciplines in Engineering, Procurement, Project and Construction management, Quality and Commercial matters.

ASSM being as a partner with high tech multi-national company aim is to immediate deliver and serve the region with experienced personnel in the major industry sector of water, waste water, Cement, Petrochemical, oil& gas, steel and Food & Beverage etc & are providing total solution with using equipment from well reputed companies of European, Japanese, Korean and American origin. We provide Totally Integrated solutions for various industrial sectors & utilities covers the following activities:

- Automation and Control Systems
- Drive Technology
- Instrumentation Solutions
- Information Technology Solutions
- Power Supply Systems Revamping and Upgrade
- Maintenance Contracts (AMC) & Spares Management
- Sales & support for Electrical & Electronics Products of various industrial make SCADA, PLC, ESD and Fail Safe Systems, covering Level 1 to Level 3 of Automation for a wide range applications.

We focus on the customer satisfaction by providing quality and efficient services. We implement and maintain a quality system that fulfills the requirements of the international quality standards.



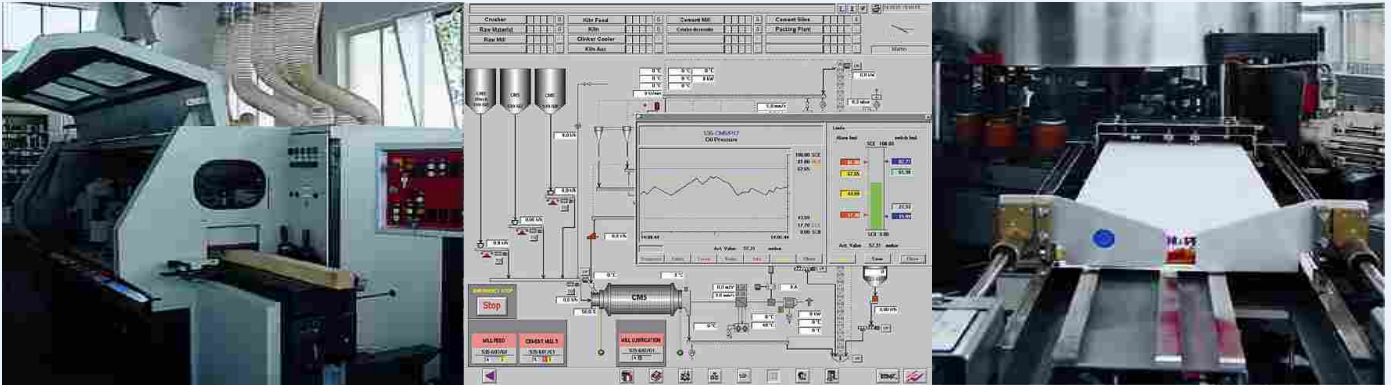
PRODUCTS:

Our highly qualified team having complete knowledge of all processes not only provide solution but also add on enhancement in process which increases your production, save time and reduce cost which results in your profit and growth.

We as partner with high tech multi-national company provides total industrial solutions using equipment from well reputed companies of European, Japanese, Korean and American origin.

We posses

- Streamlined and established systems and procedures
- Successful track record of installations
- Engineering consultancy including process and detailed engineering design.
- New projects development including techno-feasibility studies



AUTOMATION SYSTEMS:

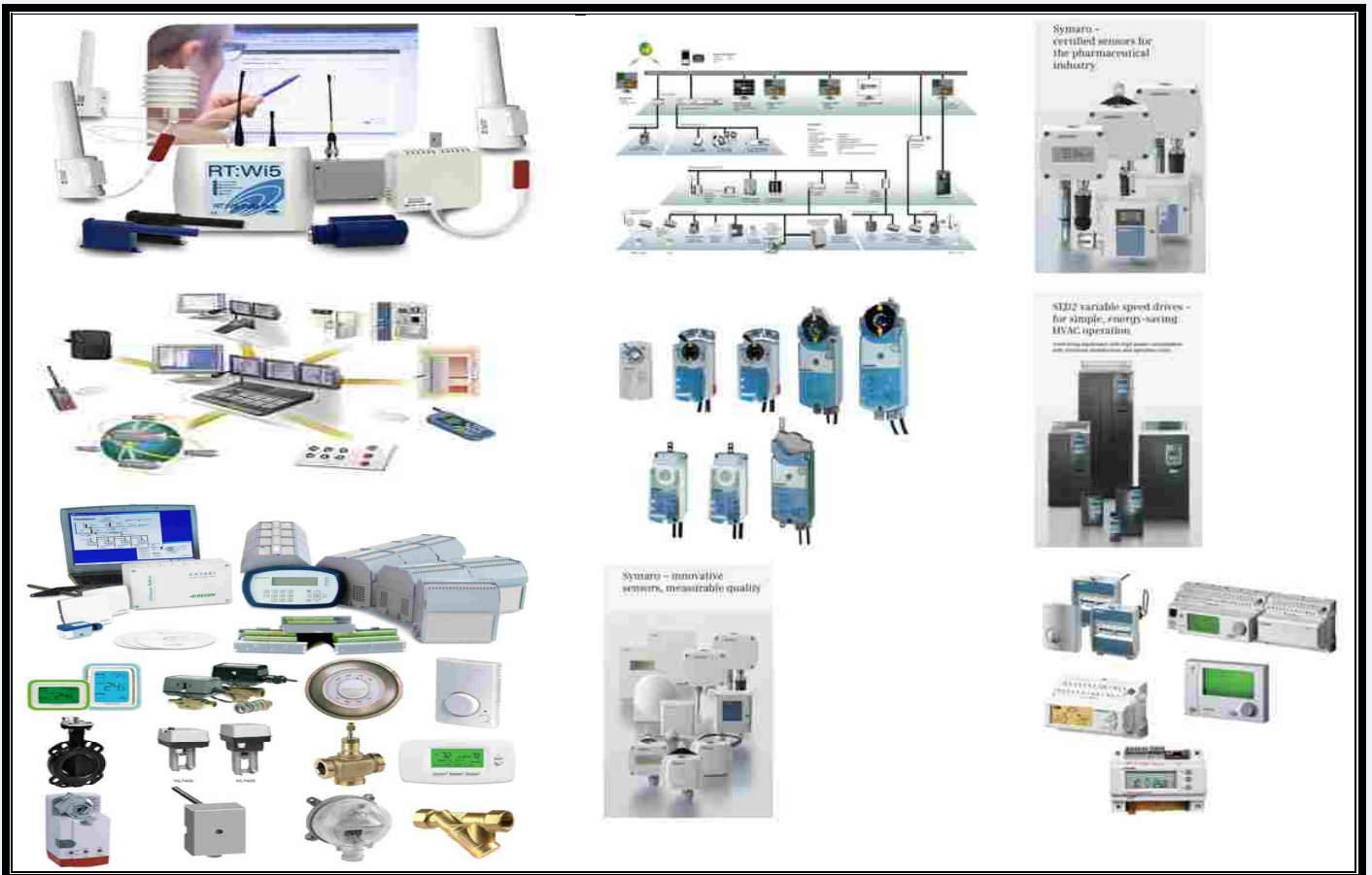
Programmable Logic Controller “PLC” from small scale automation to large scale automation, Process control system, Text Panel, Operator Panel, Touch Panel and PC’s for industrial applications. Different ranges available depending on automation task and number of input/output from Siemens, ABB, Modicon and Allen Bradley.





BUILDING MANAGEMENT SYSTEMS:

Building Management Systems covers computerized system, network components, instrumentation devices, controllers, VFD, Field Devices, software for programming, Graphical User Interfaces (GUI) and commissioning of control systems to efficiently control heating, ventilation and air conditioning (HVAC) within commercial and industrial buildings from Siemens, Trend, Honeywell, Johnson Controls, Severn Controls, TAC(now Schneider), etc





INSTRUMENTATION AND CONTROL PRODUCTS:

Temperature measuring instruments, Flow measuring instruments, Level measuring instruments, Pressure measuring instruments, Positioners, Process Controllers, Process recorders, Pneumatic devices, Gas analyzers, Switches, Breakers (MCCB, ACB), Contactors, Relays, Soft starter, Simocode Motor Management, Limit and Position switches.





DRIVE TECHNOLOGY:

AC/DC Drives: Siemens Sinamics, Simover Masterdrive, Micromaster; ABB ACS Series; Schneider Altivar, Loher Dynavert, etc.

AC/DC Motors: Siemens, ABB, Schneider, WEG, etc.





POWER PRODUCTS:

Esis Power Products: Uninterruptible Power Supplies (UPS), DC Power Supplies Inverters, Voltage Stabilizers, Frequency Converters, Battery, etc.





ENTERPRISE SOLUTIONS:

Super Nova Solutions: Application Development and support (ERP and allied products); Business Consultancy (SAP); Total IT solutions, etc.

**Grab the keys, Drive the career,
BE A SAP CONSULTANT**
Through Our SAP eAcademy

SuperNova Solutions is an authorized partner of SAP education in Pakistan. We offer a wide range of trainings in different modules.

• Financial Accounting	• Management Accounting
• Human Capital Management (HCM)	• Order Fulfillment (Sales & Distribution)
• ERP Procurement (Material Management)	• Planning & Manufacturing (PP)
• Enterprise Asset Management (PLM)	• Network Application Development Focus (ABAP)

Supported by cutting-edge software, services, and tools, SuperNova Solutions works with you to help you plan your career through proper educational counseling featuring:

• Flexible Curricula	• Flexible Schedule
• Affordable Prices	• Instructor Based Training (on request)
• Flexible Installment Plans Available	• Latest Learning Products
• Special Discount for Individual and Groups	• Placement Facility in Middle East

To choose SAP as career listen our expert | For personalized career consulting from our eAcademy executives, click here or contact 34328127 or email: info@supernova.com.pk

SuperNova Solutions
Total Business Solution Provider



PROJECTS / SERVICES:

ASSM has an expert group of professionals dedicated to understanding your business needs as well as finding the best solutions to ensure that we meet your most specific requirement. Staying on the cutting edge of the latest advances in automation and control products is our mission and your advantage in enterprise automation.

ASSM staffed with automation and control professionals who possess the project management, design, Programming and start-up experience needed to effectively meet the customer's need.

ACTIVITIES:

- Machine and Process Automation Projects
- Retrofits of old and obsolete systems
- Drives based Solutions
- BMS Solutions
- UPS, Frequency converters, Rectifiers, and Power supply Solutions.
- Start up and commissioning
- Services and Technical support for PLC's, Drives, Process Instruments and UPS.
- Motor Installation, Commissioning, Testing & Troubleshooting
- On call or breakdown call attendance round the clock.
- Services during annual turn around
- Troubleshooting
- Maintenance contracts



TRAININGS:

In a more and more complex becoming world permanent training is a permanent requirement. Applications, functionality, programming, parameterization, commissioning, troubleshooting and faults clearance will be trained under guidance of our experts in small groups.

We would provide On-site & In-house trainings and orientation for PLC's and Drives and the contents can be freely agreed and adapted to your requirements. The courses can be booked by email, by fax or by telephone.

In all trainings the participants receive appropriate documents and a certificate for the successful participation.



ASSM CUSTOMER / PROJECT REFERENCE LIST

Customer/ Contractor	Location	End user	Industry	Application/ Product	Scope or Work
Fluor Arabia	Jubail	Tasnee	PetroChem	Siemens, ABB & Danfoss Drives	Pre-Commissioning & Commissioning of Drives
Siemens KSA	Khobar	SWCC EPWTS project phase 2	Water	PCS7 based DCS project	Programming Commissioning & Testing
Van Dan Akker	Yanbu	IFFCO	Food & Beverage	Siemens S7-300 PLC/TP 277	Programming & Commissioning
Linde Gas	Jeddah	Rajhi Steel	Steel	Siemens Micro master 440 Drive	Commissioning & Testing
TUV Rheinland	Jeddah	TUV Rheinland	Automotive	Siemens Micro master 440 Drive	Commissioning & Testing
Al-Samamat	Yanbu	Yanbu Gas (SABIC)	Oil & Gas	Rockwell Powerflex Drive	Commissioning & Testing
Ministry of Higher Education	Jeddah	Ministry of Higher Education	Education	S7 1200 PLC system based automation	Automation of light control system
NWC / GETCO	Al Huney	NWC / GETCO Water & waste treatment	Water & waste treatment	Sinamics GM 150	Commissioning & Installation services of drives at NWC
Essa Bin Laden	Jeddah	Essa Bin Laden	Construction	S7 300/TP177 B	Commissioning of S7 300 / TP 177
A. Lateef Ployster	Jeddah	Abdul Lateef Ployster	Chemical	Micro Master MM 440	Commissioning of drives
Grain Silos & Flour Mills Organization	Hail	Grain Silos & Flour Mills Organization	Food & beverage	S7 200 / 300 / 400 , Win CC server, TP 177B , MP 277	Commissioning & annual contract for plants preventive maintenance
Yamama Cement	Riyadh	Yamama Cement	Cement	Simovert Master drives	Commissioning & PM contract
Siemens KSA	Jeddah	DP World – Jeddah Port	Port	Motion control Crane Service	Service Support Container Crane, Jeddah Port
NATPET (National Petrochem)	Yanbu	National Petrochemical Industrial Co	Chemical	Analyzer Gas Chromatography Instrumentation	Inspection and troubleshooting field Services
Siemens KSA	Jeddah	ARAMCO	Power	Micro Master drives	Services in Micro Master Drives
Siemens KSA	Jubail	NCP Jubail	Chemical	Start up and Field Services	Services for Large Drives Inspection and troubleshooting
Siemens KSA	Shoaibah	Shoaibah Power Plant	Power	Breaker	Shoaibah Power Plant Breaker Modification
Yansab	Yanbu	Yansab	Chemical	Field Service	Service of PLC& DCS
Saudi Aramco Harad	Riyadh	Saudi Aramco Harad Gosp2	Oil & Gas	AFD System	Troubleshooting of AFD System

ASSM CUSTOMER / PROJECT REFERENCE LIST

Customer/ Contractor	Location	End user	Industry	Application/ Product	Scope or Work
MA'ADEN, Rubain Al Jazirah Est	Shoibah	MA'ADEN, Rubain Al Jazirah Est	Metal & Mining	LV control – Services	Troubleshooting & commissioning of Soft starter 3RW44
JESCO Plant in Jubail	Jubail	JESCO Plant in Jubail	Power	LV Drive Field Service	Field Services
Linde Gas Plant in Yanbu	Yanbu	Linde Gas Plant in Yanbu	Oil & Gas	MV Drive Field Service	Field Services
Madinah Haram	Madinah	Madinah Haram	Misc	Sinamics GM120 LV Drive	Field Services
Ajwa- Yanbu port	Yanbu	Ajwa- Yanbu port	Port	Simoreg unit DC Drive	Field Service for Simoreg
Siemens KSA	Shoibah	Shoibah Power Plant	Power Plant	Perfect Harmony Robicon MV drive	Field Service for Perfect Harmony Robicon drive
Riyadh Cables	Riyadh	Riyadh Cables	Metal & Mining	Simovert Master drives	Field Services
PEMCO in Yanbu	Yanbu	PEMCO in Yanbu	Petrochem	Field Service for Sinumerik 820	Field Services
KAUST Job Nesma	Jeddah	KAUST	University	Robicon MV Drive	Robicon Drive Troubleshooting
ITT	Jeddah	ITT	EPC contractor	Robicon PH MV Drive	Robicon PH commissioning
Tasnee Job	Jubail	Tasnee Job	Petrochem	Sinamics GM-150 troubleshooting LV Drive	Sinamics GM-150
Saudi Aramaco	Harad	Saudi Aramaco Harad	Oil & Gas	Simovert MV Drive	PM For Simovert MV
Al-Tayar	Jeddah	Al-Tayar	Transport	Simovert Master drives CUMC	Commissioning of Master drives CUMC
SPCC Bisha	Bisha	SPCC Bisha	Cement	Simovert Master drive 800KW	Simovert Master drive
Shoibah Power	Shoibah	Shoibah Power plant	Power	Perfect Harmony Robicon	Fisia Job Perfect Harmony Robicon
Siemens LCC Dubai	Dubai	Ministry of Water	Water	Robicon PH MV Drive	Commissioning of Drives
Enel Power / Ansaldo	Yanbu	Enel Power / Ansaldo	Power	PLC	Commissioning and services
United Sugar Company	Jeddah	United Sugar Company	Sugar	UPS and Battery Services	Service For Filler / UPS Load Test / Recharging And Load Testing
GETCO	Dammam	GETCO	Water	Simovert MV	Field Services for Simovert MV
Middle East Paper Co	Jeddah	Middle East Paper Co	Paper	soft starters 3.3KV	Commissioning of IGEL make soft starters



REGISTERED OFFICE & CONTACT DETAILS:

MR. AKBER HASSAN

(General Manager)

Cell: +966503009082

Email: info@assm-sa.com

**Automation System
Solutions & Maintenance Est.**

Office no 34, 1st floor, Al Nafjan Building,
King Fahad Street (Siteen)

P O Box: 53098 Jeddah 21583 KSA

Tel: +966 2 6172686

Fax: +966 2 6752661

Web: www.assm-sa.com

